

# PRO-100™ Home Automation Controller

## Automate Your Family with the HomeSeer PRO-100

Our PRO-100 is an advanced home automation controller that's designed to simplify your life by integrating and automating the major systems of your home! Use it to monitor and control lighting, appliances, climate, security, telephones, irrigation, window shades and home entertainment equipment.

- **Keep tabs on your home while you're away!**
- **Ensure your family is safe!**
- **Receive announcements, alerts and reminders!**
- **Conserve energy and lower utility bills!**
- **Retrieve phone messages by web or phone!**

The PRO-100 supports the widest variety of user interfaces available. Choose from in-wall button controllers, touchscreens, wireless remotes, room microphones, PDAs, PocketPCs, telephones (voice and DTMF control) and personal computers. Mix and match any combination of interfaces you like to suit the needs of your family.

The built-in web server allows you to access your home while you're away at work or on vacation. Easily keep tabs on your home and family with any web browser. Receive emails or calls when things happen at home or people come and go.

Now you can finally have the peace of mind that comes from knowing your family and home are safe and secure!



HomeSeer PRO-100 Home Automation Controller



### Key Features

- Built-in web server for remote access anywhere.
- Easy-to-use web interface allows easy access and control with any web browser.
- Supports the widest variety of user interfaces, including in-wall controllers, touchscreens, wireless remotes, PDAs, PocketPCs, cellphones and voice (microphones).
- Compatible with a wide variety of technologies and companies including Lutron®, Leviton®, Z-Wave®, UPB™, Insteon® and many others.
- Designed for voice control by microphone and telephone.
- Creates alerts, announcements and reminders by email, telephone and text message.
- Supports complete telephone messaging with caller ID announcements (with optional hardware).
- Includes calendar-based functions for easy scheduling.
- Automation events may be created 'on-the-fly' with voice commands.
- HSProtect™ guards the embedded operating system from virus, spyware and malware attacks.
- Built-in HSSentry™ continuously monitors unit to ensure ultra-reliable operation.
- Fanless, diskless design for silent operation and ultra-high durability.
- Ultra low power consumption conserves energy and lowers utility bills.
- Includes true 'trigger-based' automation with advanced conditional options.
- Built-in power failure recovery feature runs events missed during outages when power is restored.
- Includes multiple serial, USB and Ethernet ports for integration with the most commonly used technology interfaces.

**HomeSeer**®

# PRO-100™ Home Automation Controller

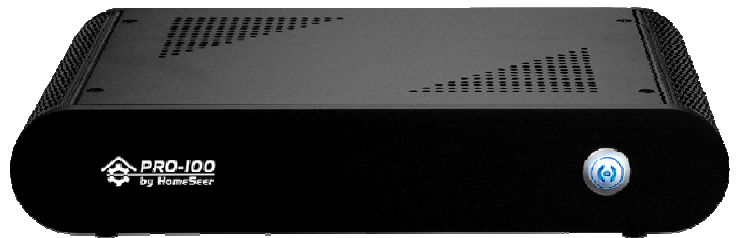
## Technical Specifications

### PRO-100 System

- Control Software:** HomeSeer HSPRO
- Processor:** 1.5 GHz Intel Celeron M
- Operating System:** Windows XP Embedded
- DDR Memory:** 1 GB
- Storage:** 2 GB DOM
- Serial Ports:** (4) 9-pin RS232
- USB Ports:** (2) USB 2.0
- Audio:** Mic in / Line out
- Network:** (2) 10/100 Ethernet
- Monitor:** SVGA
- PS2 Ports:** Keyboard & Mouse
- Power Consumption:** 15 watts (nominal)
- Power Supply:** 120-240v, 50/60 hz
- Dimensions:** 11"W x 2"H x 7"D
- Certifications:** UL, CE, FCC, RoHS



HomeSeer PRO-100 Back Panel



HomeSeer PRO-100 Home Automation Controller

## Technologies Supported

### LIGHTING

- Hard-wired:** Lutron® HomeWorks™, Centralite® LiteJet™
- Wireless:** Z-Wave®, Lutron RadioRA®
- Powerline:** Insteon®, UPB™, Lightolier®, X10

### SECURITY

- Serial:** DSC®, Napco®, HAI®, OnQ®

### HVAC

- Z-Wave:** RCS®, CamStat™, HomePro™
- Serial:** Aprilaire®, Enerzone®, RCS, HAI, Proliphix®

### MEDIA

- Interface:** Microsoft Windows® Media Center
- Media Players:** Apple iTunes®, MS Windows® Media Player
- Distr Audio:** Russound RNET Systems (CAV / CAM)

### INFRARED

- Serial:** ADI Ocelot™ / SECU-16IR
- Ethernet:** Global Cache GC100™

### DIGITAL I/O - CONTACT CLOSURE

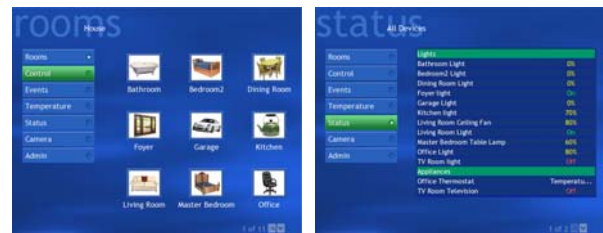
- Serial:** ADI Ocelot / SECU-16
- WGL Relay8

### IRRIGATION

- Serial:** WGL Rain8

### RFID

- Serial:** iAutomate



Windows® Media Center Interface



HTML Web Interface



Optional Way2Call Telephone Interface