

# DSC Security Plugin for HomeSeer

## Introduction

Thank you for the purchase of the HomeSeer DSC Security Plugin! The HomeSeer DSC Security plugin gives you total automation control of your DSC Security System.

## Requirements

There are several requirements to using the HomeSeer DSC Security plugin:

- HomeSeer Version 2.1.0.0 or higher must be installed.
- A DSC Security Panel, either MAXSYS or Power864 Series must be installed in your home, and connected with a PC communications module. Refer to your DSC documentation on more information on how to set up these interfaces
- The PC Communications module must be connected to your HomeSeer computer via a COM port.

## Installation

1. To install the DSC Security plugin plug-in for HomeSeer version 2.x, select the "Updater" button on the web interface, or select "Updates" from the "Help" menu. Follow the on-screen instructions for the Updater.
2. Select the DSC Security plugin plug-in on the package selection screen, then follow the on-screen instructions to finish the update process, and restart HomeSeer.
3. After restarting HomeSeer, click the "Setup" tab and then the "Interfaces" tab on the web site. Click "Enable" to enable the plugin, and then click "Save" at the bottom of the screen
4. To use the DSC Security plugin, you must first **register** the plug-in. There are two methods of registration, depending upon the information that you have been provided from the time of purchase.
  - a. Click "Unregistered" or "Trial" button on the line containing the DSC Security plugin Plug-in to register. This will display the Registration Screen.
  - b. Enter your License ID and Password included on your order receipt. Click the "Register" button. If you have any technical difficulties, see the Support section of this manual and open a ticket at or help desk.

## DSC Security Status Page

## Information

The HomeSeer Status page will display information about your DSC devices. You can use this page to check the status of your devices, or control certain panel actions.

## Basic Control Instructions

### To Arm a Partition

1. Click the "Arm Partition" button for the partition that you would like to arm

### To Bypass/Unbypass a Zone

1. Click the "Bypass" or "Unbypass" button next to the zone that you want to access. **NOTE:** These buttons are not available when using the 5401 panel.

## Page Items

### Status Column

Under the "Status" column, the plugin will display up to three unique messages regarding the panel's status. For example, a partition may report its status as "Partition Not Ready", but might also send "General System Trouble". The plugin displays all messages so that you know what the detailed status of the panel is.

### Name Column

The "Name" column shows the names of Partitions and Zones. These can be renamed to whatever you like, so "Zone 1" can be renamed to "Front Door". To rename a zone or partition, click on the blue link in the "Name" column.

### Control Column

This column contains buttons to control your zones and partitions. Click on a button to perform the action, see Basic Control Instructions above for more info.

## Setup Screen

The screenshot shows a web browser window titled "DSC Security - Microsoft Internet Explorer". The address bar shows "http://localhost:82/DSC\_control". The page content includes a navigation menu with buttons for Status, Events, Log, Control, TV Timer, Setup, Threads, Phone, Updater, Help, About, and Log Out. Below the menu are three buttons: "DSC Security Partition 1", "Weather", and "Weather Admin". The main heading is "DSC Security Configuration". Under "Panel Settings:", there are several configuration options: Panel Type (PC 4401), Baud Rate (1200), Number of Zones (0-128) (1), Number of Partitions (1-8) (1), Master Panel Code (4-6 Digits) (1234), Polling Timer (seconds) (60), Enable Logging (Yes), Enable Status Logging (messages from panel) (No), and Enable Debug Logging (errors, etc.) (Yes). A "Save" button is located below these settings. At the bottom, there are links for Home, Events, and Status, and a "powered by HomeSeer" logo. The browser's status bar at the bottom shows "Done" and "Local intranet".

## Information

This screen is used to control the settings for communicating with the panel. It can be accessed by clicking the "Config" button on the "Interfaces" screen.

## Page Items

## Panel Type

Select either 4401 or 5401 to tell the plugin which module you are communicating to the panel with. The 4401 is used with the MAXSYS panel, and the 5401 is used with the Power864 panel series. You MUST select the correct panel in order for HomeSeer to display the correct actions and triggers.

## Baud Rate

This setting determines the speed that HomeSeer uses to communicate with the panel. See your DSC documentation for more information on how to configure this setting on the panel.

## Number of Zones (0-128)

Tells HomeSeer how many zones you are using with the panel. If you select "13", HomeSeer will create devices for Zone 1, 2, ... 13, and monitor these zones. This will only monitor consecutive zones, so if you are using zones 1,2,3, and 5, for example, you must enter 5 in order for HomeSeer to monitor that zone.

## Number of Partitions (1-8)

Tells HomeSeer how many partitions you have in your system. Like the Zones property, this will monitor the number of Partitions that you enter, so if you enter 3, HomeSeer will monitor Partitions 1, 2 and 3.

## Master Panel Code

This is the 4 or 6 digit code that HomeSeer needs to connect to the panel in certain circumstances, and must be used in order to connect to the panel properly.

## Polling Timer

HomeSeer will automatically interpret messages from the panel and update the status of your devices, but the Panel does not always send messages back to HomeSeer when its status changes. Setting this value tells HomeSeer to get the latest information from the panel at the interval you set. Setting this value to 0 disables polling.

## Enable Logging

Yes: Enables DSC general log messages, No: disables all DSC log messages.

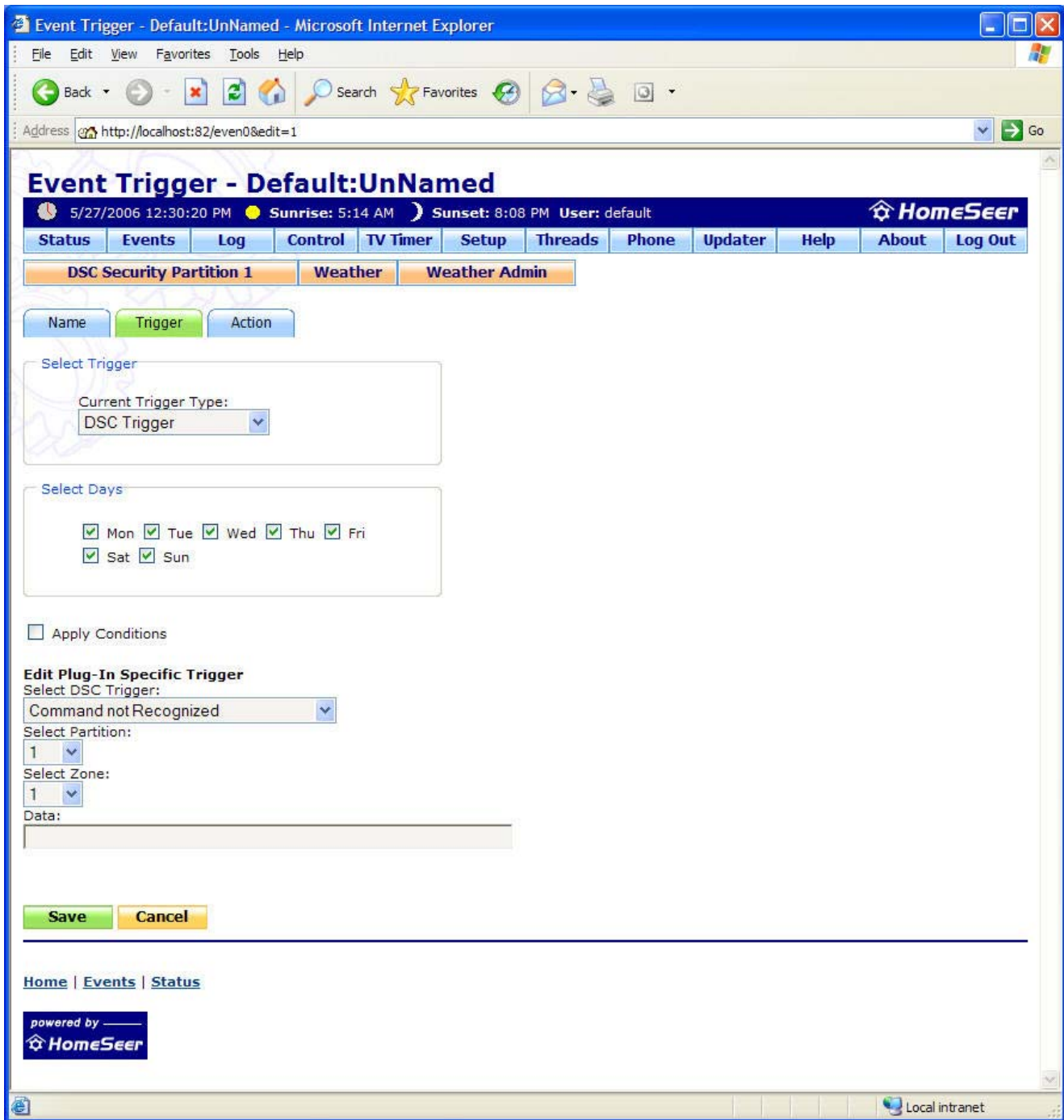
## Enable Status Logging

Yes: Enables DSC status log messages, these are communications from the panel that give its status. No: disables DSC status log messages.

## Enable Debug Logging

Yes: Enables DSC debug log messages, these can give descriptive information about the plugin if you are having trouble, No: disables DSC debug log messages.

## Event Triggers



## Information

The DSC Security plugin can trigger events based on changes in the DSC Security panel. The instructions to create events based on these triggers are explained below.

## Creating an event based on a DSC Security Trigger

1. Click the "Add Event" button on the Event screen
2. Select the "Trigger" tab
3. Select "DSC Security Trigger" from the Trigger type dropdown list
4. Select one of the trigger types, described below.
5. Click the "Save" button, and customize the event with the actions you would like.

## DSC Security Trigger Types

## Select DSC Trigger

This dropdown contains ALL messages that can come from the DSC panel. Any message can be configured to trigger an event, but some require specific data. See Below for more information.

Based on the trigger that is selected in the first dropdown, the three additional fields will appear or disappear as needed. This ensures that you will not have extra data to prevent an event for triggering. For example, if you select a partition event as the trigger, and the zone field disappears, this is because the zone is not needed or specified to trigger an event.

## Select Partition

This sets the event to trigger only when caused by a certain partition.

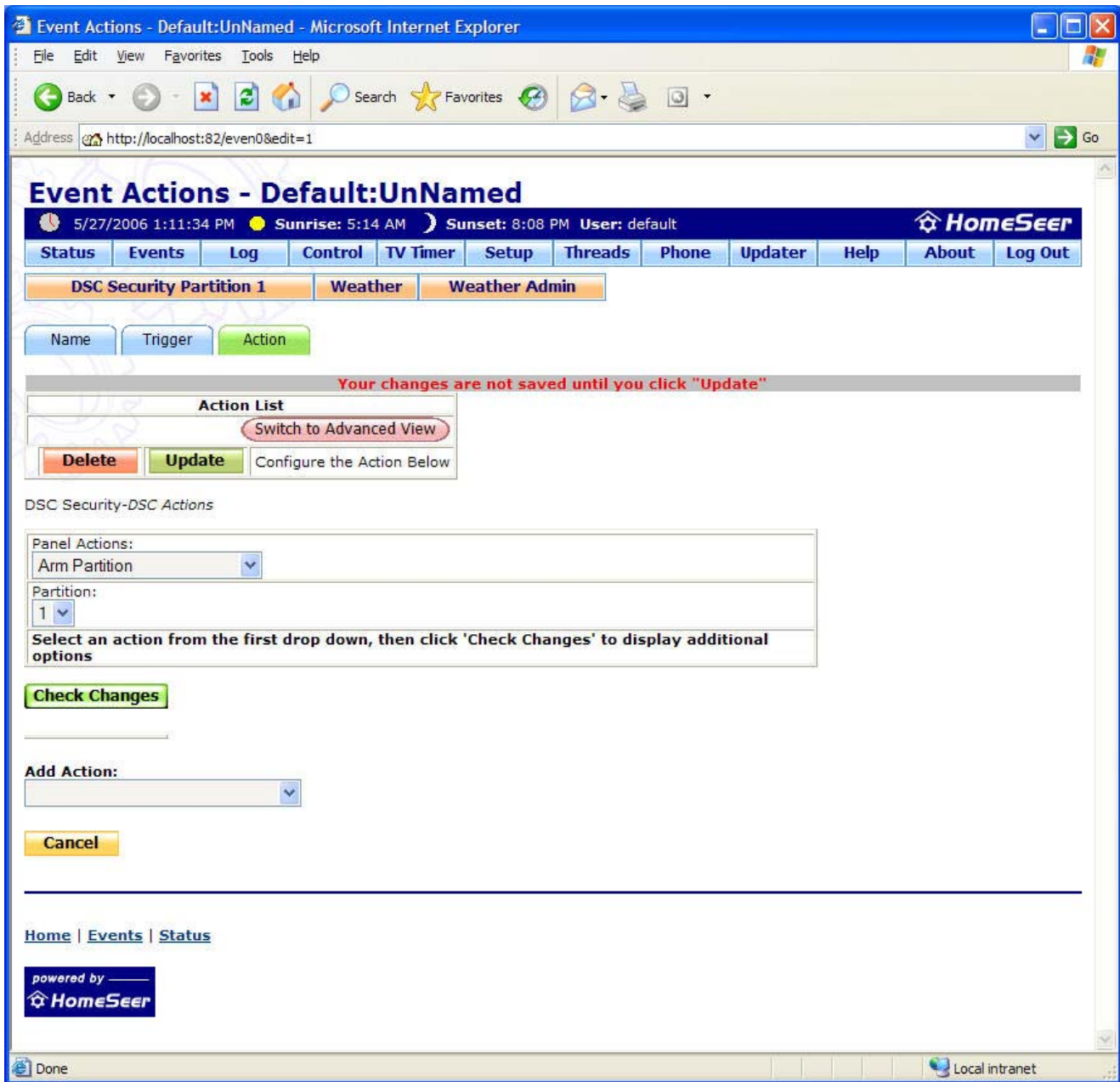
## Select Zone

This sets the event to trigger only when caused by a certain zone.

## Data

This sets the event to trigger only when caused by certain data. See the DSC documentation for more information on how to implement this.

## Event Actions



## Information

HomeSeer can change the status on certain items on the DSC panel. See below for information on configuring specific actions

## Creating an event with a DSC Security Trigger

1. Click the "Add Event" button on the Event screen
2. Select the "Actions" tab
3. Select "DSC Actions" from the Action type dropdown list
4. Select one of the action types, described below, then click "Check Changes"
5. Configure the specific properties for the action, described below, then click "Update".
6. Click the "Save" button, and customize the event with the trigger you would like.

## DSC Security Action Types

### Status Report

Polls the panel, and gets the updated status for all zones and partitions.

## **Set Date and Time to Now**

Sets the Date and Time on the panel to now, useful for recovering from a power failure or simply maintaining accurate time.

## **Command Output Control**

Sets a command output on a specific Partition to ON or OFF, changing the current value. See the DSC documentation for more information.

## **Arm Partition**

Arms the selected partition on the DSC Panel.

## **Disarm Partition**

Disarms the selected partition on the DSC Panel.

## **Arm Partition - "Stay" Mode (5401 Only)**

Arms the selected partition on the DSC Panel in "Stay" mode.

## **Arm Partition - "Zero Entry Delay" Mode (5401 Only)**

Arms the selected partition on the DSC Panel in "Zero Entry Delay" mode.

## **Arm Partition - "With Code" Mode (5401 Only)**

Arms the selected partition on the DSC Panel in "With Code" mode.

## **Enable/Disable Descriptive Arming Control (5401 Only)**

Enables or Disables descriptive Arming Control. See the DSC documentation for more information.

## **Enable/Disable Time Stamp Control (5401 Only)**

Enables or Disables Time Stamp Control. See the DSC documentation for more information.

## **Enable/Disable Time Broadcast Control (5401 Only)**

Enables or Disables Time Broadcast Control. See the DSC documentation for more information.

## **Enable/Disable Temperature Broadcast Control (5401 Only)**

Enables or Disables Temperature Broadcast Control. See the DSC documentation for more information.

## **Trigger Panic Alarm (5401 Only)**

Triggers a Fire, Ambulance, or Panic alarm on the DSC panel. See the DSC documentation for more information.

## **Bypass Zone (4401 Only)**

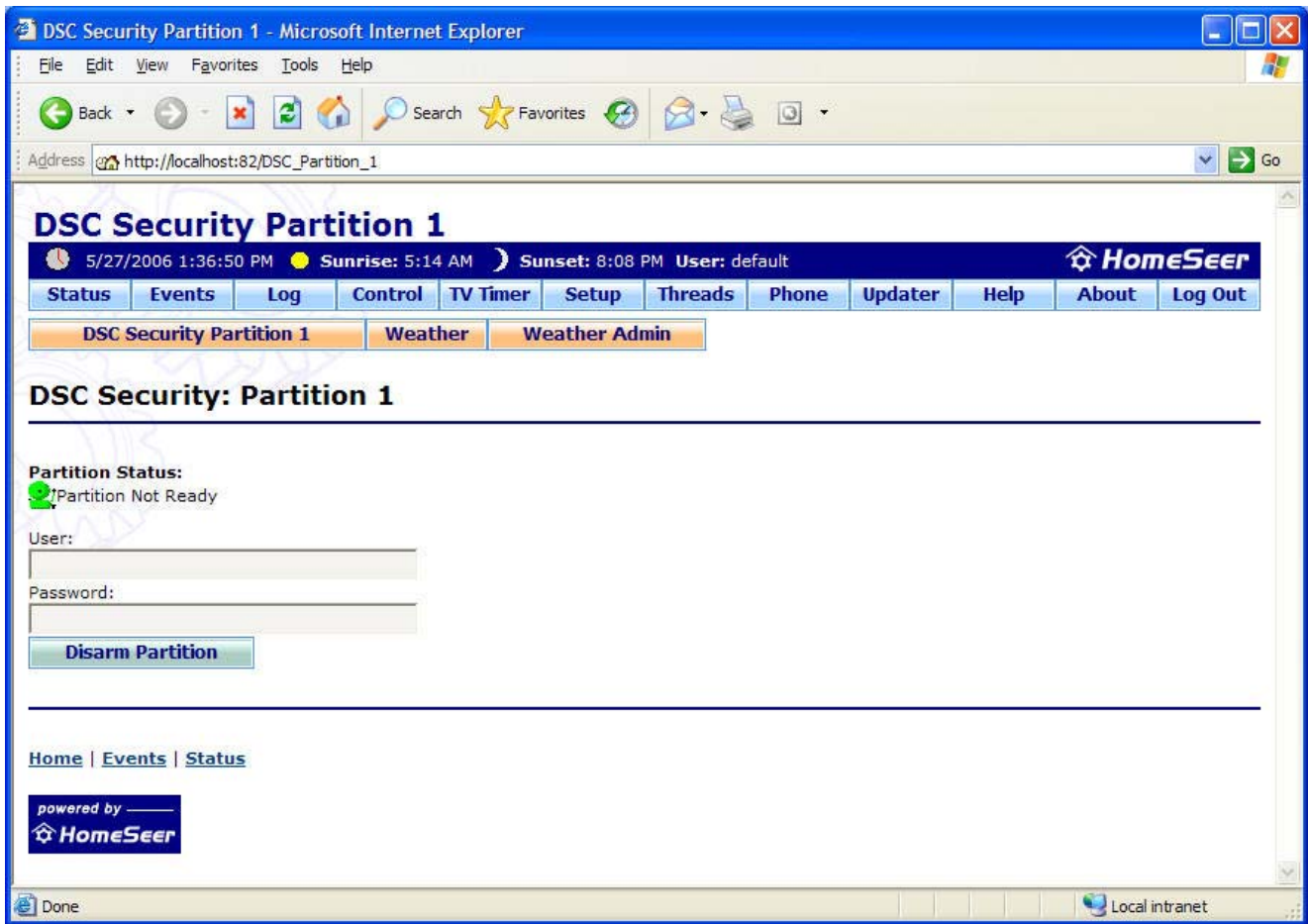
Bypasses the selected zone on the DSC Panel.

## **Unbypass Zone (4401 Only)**

Unbypasses the selected zone on the DSC Panel.

# **DSC Arming/Status Page**





## Information

The DSC plugin will create a page that displays the status messages from each partition, as well as the ability to arm the partition.

## Page Items

### Partition Status

This displays the messages for the status of the panel. These are the same messages that are displayed on the front panel.

### User/Password

These are used to disarm the Partition. Enter a valid HomeSeer user/password combination (default/default) and click "Disarm Partition" to disarm the partition.

## Support

For Support:

Help Desk: <http://www.homeseer.com/> (select *HelpDesk* from the *Support* menu)

Support is also available on our message board at:

<http://board.homeseer.com/>

Look for the forum dedicated to the DSC Security plugin.